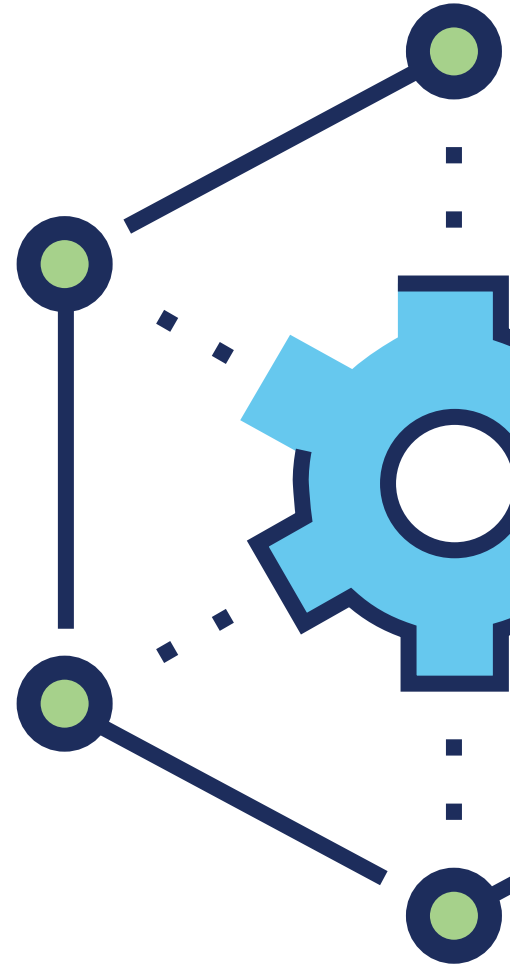


Seven Tips for Implementing **COBIT**

To say the digital age is both unpredictable and constantly evolving is an understatement. Digital trust professionals and their organizations are at the forefront of these changes, making it critical that both are prepared to meet the dynamic challenges they encounter. In order for businesses to survive and thrive, it is crucial that enterprise governance and management processes are effectively implemented in order to enable a governance system that supports best business practices and digital transformation.

ISACA's COBIT framework optimizes enterprise IT governance to enable integration with industry standards and business success. COBIT empowers professionals to utilize industry best practices to enhance the governance system to improve organizational performance in such areas as governance, risk management, cybersecurity, controls and digital trust.



HOW CAN COBIT BE SUCCESSFULLY IMPLEMENTED?

Longtime COBIT user Abdul Rafeq shares the following seven tips.

Culled from more than
27 YEARS OF EXPERIENCE
 ON A COBIT JOURNEY.

[LEARN MORE ABOUT COBIT HERE >](#)



KNOW WHY

Identify enterprise objectives and determine the desired outcome of the governance system.

KNOW WHERE

Identify the specific business process, area, department or location where implementation is to be performed. Prepare the project plan including milestones and deliverables.



KNOW WHAT

Identify which COBIT objectives are in scope and what other framework(s) or standard(s) are to be integrated. Focus on the COBIT components (e.g., processes, etc.) that are most relevant to enterprise needs.

KNOW WHO

Identify the stakeholders involved and their roles in implementation.



KNOW WHEN

Identify the specific timelines within which the implementation will be conducted.

KNOW HOW

Formulate and execute the strategy and methodology of implementation. Develop templates and customize the content from COBIT to meet enterprise needs. Implement the relevant processes and activities in a phased approach that includes identifying milestones and deliverables.



KNOW VIEWS

Implement a performance management system and dashboards to monitor and evaluate the deliverables to ensure that results are achieved on an ongoing basis. The performance metrics and dashboards should provide both a satellite view and a street view (i.e., a macro and a micro perspective) at different levels of processes and activities.